

Bishop Milner Catholic College
Instructions for installing SSL Certificates



Created By Mr Sumner

December 2015 (version 1)



Installing SSL Interception Certificates



Microsoft Windows

Click on [Install SSL Certificate](#) and download the certificate to your computer, then

- 1) In Windows Explorer, navigate to the download location
- 2) In turn, double-click on the certificate
- 3) When prompted click **Open** and then **Install certificate** (Figure 1)
- 4) Select “**Local Machine**”¹ and then click **Next**
 - a. If prompted by “User Account Control”, click **Yes**
- 5) At the certificate store prompt select “**Place all certificates..**” and then click **Browse** and choose “**Trusted Root Certification Authorities**” (Figure 2)
- 6) Click **Next** and then **Finish**.
- 7) You should then get a message stating that “You’ve successfully imported the certificate”. Click **OK**
- 8) Click **OK** to close the certificate window.

¹ Choosing “Local Machine” at this point will install the certificate and make it accessible to all users. This will require the logged in user to have Administrator rights. Choosing “Current User” will not require Administrator rights, but will only install the certificate for the current user



Figure 1 - Click Install Certificate

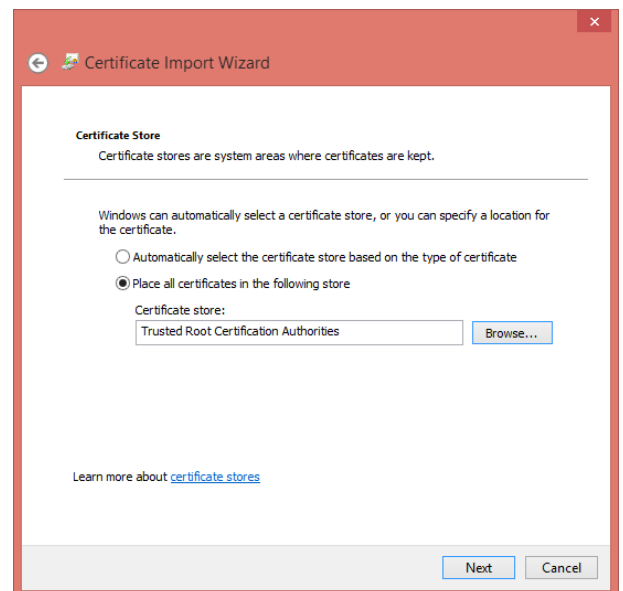


Figure 2 - Select Certificate Store



Installing SSL Interception Certificates



Apple OSX

Click on [Install SSL Certificate](#) and download the certificate to your computer, then

- 1) In Finder, navigate to the download location
- 2) In turn, double-click on each certificate
- 3) The “Keychain Access” application will launch. When prompted enter an Administrator's username and password
- 4) If prompted where to import the certificate to, select **System**
- 5) When the certificate is displayed click **Always Trust** (Figure 1)
- 6) Re-enter the administrator credentials and click **Update Settings**

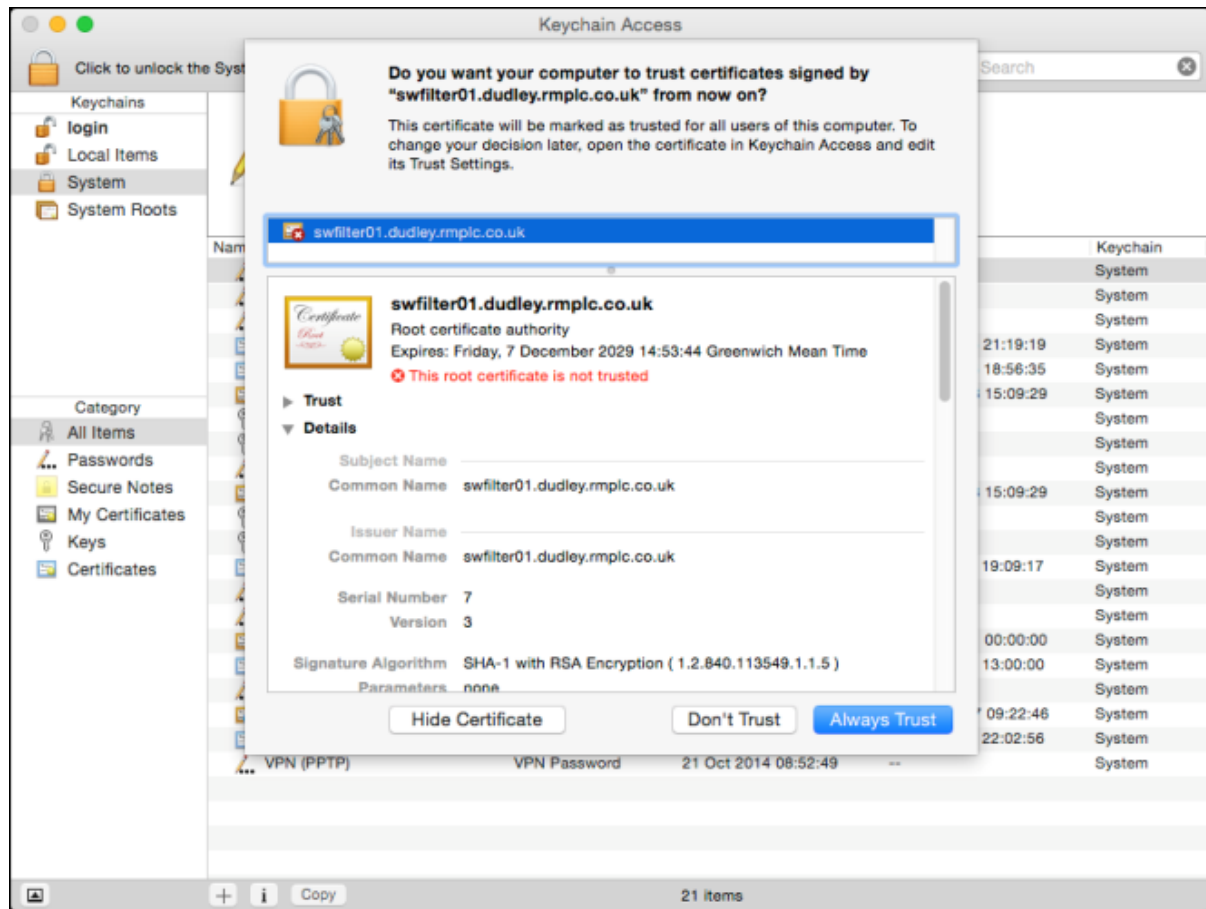


Figure 1 - Trust the certificate



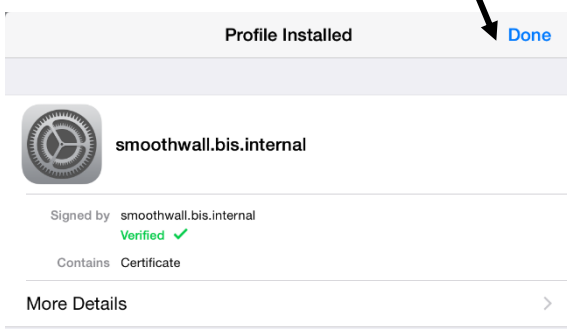
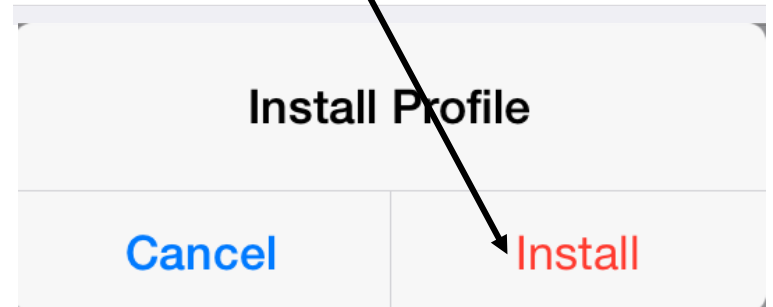
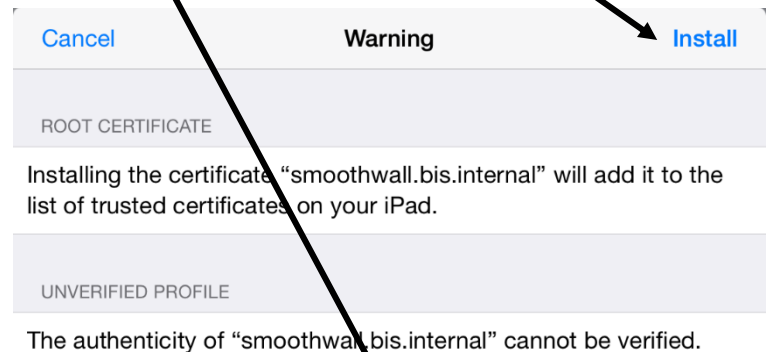
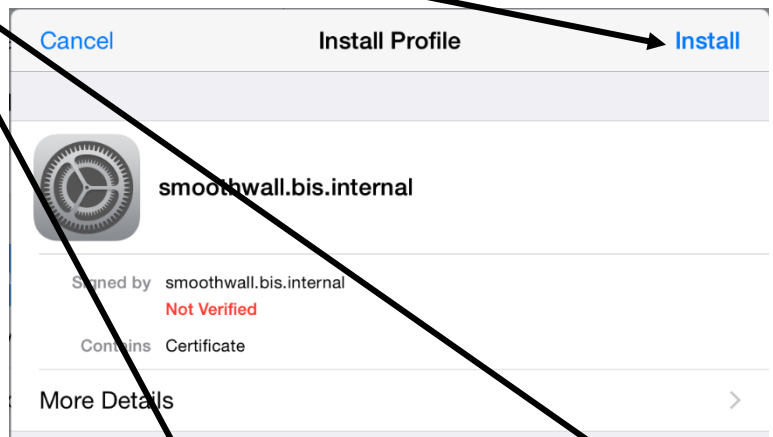
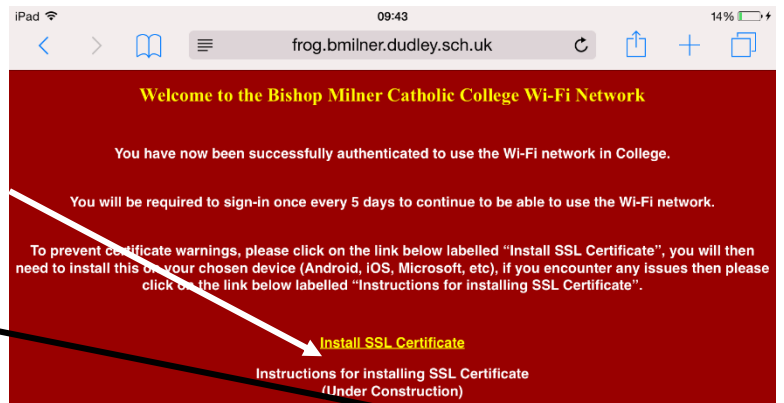
Installing SSL Interception Certificates



Apple iOS Devices (iPad's, iPhone's, iPod Touches)

Click on [Install SSL Certificate](#) on this document or the page after you have logged in and download the certificate to your device, then

- 1) Press Install
- 2) Enter passcode if you have one on your device
- 3) Press install on the two boxes
- 4) Once complete press done and continue to browse the web on your device





Installing SSL Interception Certificates



Android Devices

Click on [Install SSL Certificate](#) on this document or the page after you have logged in and download the certificate to your device, then

1. Enter **Bishop Milner** into the Certificate name box
2. Choose **WiFi** from the box named Credential use:
3. Press OK and continue to browse the web on your device

